

PTI NEWS

OFFICIAL NEWSLETTER FOR PATHS TO INDEPENDENCE SCHOOL

AUTISM AWARENESS MONTH



Autism Awareness Month

By Sam W.

Autism Awareness Month, also known as Autism Acceptance Month, always happens in April. It is the month that we celebrate those who are on the autism spectrum, supporting them and making sure that they are appreciated by others.

Our school has a way to celebrate this month with two different things. One is the blue light bulb handout. The other is the Light it Up Blue 5K and Fun Run, which helps the school and is one of the major events besides Dancing with the Bartlesville Stars to happen during the year.

Facts to Know

Back in 1972, Autism Awareness Month was called National Autistic Children's Week. It was then turned into Autism Awareness Month/Acceptance Month, which makes sense in our modern standards as a way to celebrate the acceptance of people with autism.

Autism spectrum disorder is five times more likely to affect boys than girls. It's one of the fastest-growing developmental disorders in the United States, more common than childhood cancer, diabetes, and AIDS combined.

The Greek word "autos" means self.

Hyperlexia, the ability to read above one's age or grade level, often accompanies autism spectrum disorder. This can be a positive trait for a person on the spectrum, since it can help them excel in fields such as technology, journalism, mathematics, and scientific studies.

We hope this helped you understand more about autism. Have a great rest of the month and happy Autism Acceptance Month.

From Clair's Desk

PTI is excited to celebrate Autism Awareness this month! If you want to help us celebrate, stop by PTI and pick up a blue light bulb for your porch. You can also sign up for PTI's Light It Up Blue 5K and Fun Run to be held on April 30th. The 5K starts at 8 a.m. and the one-mile Fun Run starts at 8:15.

This year, we have some fun additions to our run. Leadership Bartlesville Class 30 is joining us at the run with fun family games and breakfast from Chick-fil-A. (Leadership Bartlesville is supporting our jobs program by raising funds to help us develop our recycling center.) Tentatively scheduled from 11 a.m. to 1 p.m. after the run, Daybreak Rotary is hosting a Grilled Cheese Challenge at Cooper and Mill to benefit PTI. We plan to have student chefs pair with "pros" from the community to make the best grilled cheese in Bartlesville! Truity Credit Union is sponsoring this event and offering grilled cheese sandwiches to the public for a donation to PTI. Mark your calendar for April 30th. It's going to be a fun day! — Clair Bartley

INSIDE THIS ISSUE

PAGE 2:

TAXCREDIT SCHOLARSHIPS
ST. PATRICK'S DAY

PAGE 3:

STUDENTS GET
CREATIVE

PAGE 4:

MORE
STUDENT
CREATIVITY

HELP PTI STUDENTS GET SCHOLARSHIPS

THE OPPORTUNITY SCHOLARSHIP FUND

***PROVIDE SCHOLARSHIPS TO PTI STUDENTS**

***RECEIVE GENEROUS OKLAHOMA TAX CREDITS**

Tax Credit Scholarships

Oklahoma is one of 18 states with a tax-credit scholarship program. Under Oklahoma's program, a tax credit of up to 75% is offered for donations to a scholarship granting organization. Income tax credits are capped at \$100,000 for qualified business entities, \$2,000 for taxpayers filing a joint tax return, and \$1,000 for individual tax filers.

Tax-credit scholarships save Oklahoma money.

Considering the state's share of per pupil expenditures, the fiscal return to the state is \$1.51 saved for every \$1 in tax credits issued.



What's the difference between a tax credit and a tax deduction?

Both tax credits and tax deductions help reduce the overall taxes that you pay, but tax credits are much more valuable because tax credits directly reduce your taxes dollar-for-dollar. **You do not have to itemize your federal tax deductions to receive the Oklahoma tax credit.**

For more information, contact PTI or visit <https://osfkids.org/>

St. Patrick's Day

By Emma W.



St. Patrick's Day was first celebrated on March 17, 1601, in honor of Saint Patrick's death in 461. Saint Patrick was born in Britain, but was apparently kidnapped and taken to Ireland at age 16. He once escaped, but he then got back to Ireland. There, he became a Christian and converted many others to that religion. Suddenly, many people took advantage of him and praised him.



The Irish Roman Catholics would feast on bacon and cabbage and do musical gatherings like ceili. The first St. Patrick's Day parade actually took place in St. Augustine, Florida. The three leaves on a shamrock would be based on the Trinity: the Father, the Son, and the Holy Spirit. Other activities we celebrate on St. Patrick's Day are wearing green, celebrating being Irish, and looking for four leaf clovers.



PTI STUDENTS GET *Creative*



HOW THE WORLD IS ABLE TO CREATE A MOON BASE TODAY

Humans dream of traveling to other galaxies. But we're nowhere close to that. Or are we?

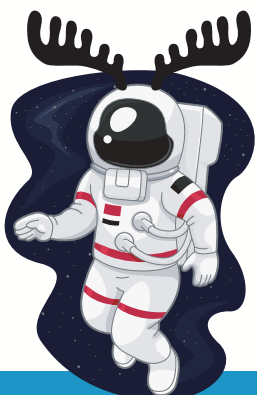
The reality is we could start building a moon base today. We actually have the technology. NASA estimates that it will be 20 to 30 billion dollars spread out over a decade, a price comparable to the International Space Station or the budget of Germany in 2017. Not that big of an investment really.

The pay-off would be immeasurable. The moon is a sandbox to develop new technologies and exploit unlimited resources. It would be the start of a new space race, and lay the foundation for us to spread out over the solar system and beyond. It would create a vast array of new technologies to benefit us on Earth, and we all could be a part of it if we start today.

How would we build a moon base? Let us discuss the phases of colonization. In the first phase, for like a new world for example, European monarchs funded expeditions to explore new territory. In the second phase, we would send little bases that could be taken down easily. It would be set up in one of the craters to protect from asteroids. It would run off solar power and would be able to help four people survive who would come with food, a grow bed, and a freshwater machine. And they would be good for about four months and would just lay the groundwork for more permanent stuff.

Only then can we start the third phase. You can start building permanent bases now. You might be wondering how we would get oxygen and food/water. For oxygen, the moon has polar ice caps. There's a machine on the International Space Station that can convert water into oxygen. For food we could bring dirt from Earth to help grow plants. When it's set up, we would be able to expand to other parts of the moon. Eventually we would colonize the moon and after a while we would populate it.

Thanks for reading, my name is Michael, I'm a PTI student, and I love science.

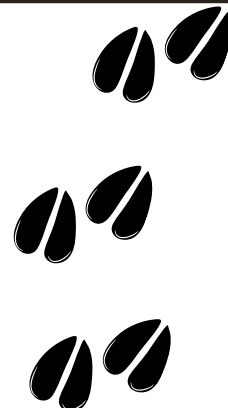


Emma's Limerick

By Emma W.



**Let me tell you about PTI.
It's a very great school of mine!
There's some work to do,
And activities too,
And other stuff to pass the time!**



MALCOM'S CHICKEN BACON RANCH PENNE PASTA RECIPE

INGREDIENTS:

1 POUND OF PENNE PASTA
 ½ CUPS OF RANCH DRESSING
 3 PIECES OF CHICKEN SHREDDED
 1 JAR OF ALFREDO SAUCE
 6 CHOPPED BACON
 2 CUPS OF MOZZARELLA CHEESE



INSTRUCTIONS:

COOK THE PASTA ACCORDING TO THE DIRECTIONS. WHILE THE PASTA IS COOKING, COOK THE CHICKEN AND THE BACON AT THE SAME TIME THEN CHOP THEM BOTH INTO LITTLE PIECES. WHEN THE PASTA IS DONE, POUR THE ½ CUP OF RANCH DRESSING, 1 CUP OF ALFREDO SAUCE, AND THEN THE CHICKEN AND THE 2 CUPS OF MOZZARELLA CHEESE INTO THE SAME PAN AS THE COOKED PASTA. STIR OCCASIONALLY FOR 10 TO 20 MINUTES OR UNTIL COOKED THOROUGHLY. ENJOY!



ELI'S OGRE



Skyler's lego car



Dobson Brother's 3D Designs

Left: Cooper's "Chain Mage"
 Right: Cameron's "Among Us" character

Paths To Independence **Newsletter**

Layout by Lisa Collins

Newsletter staff: Emma W.,
 Cameron D., Kaleb C., Daegon C.
 Brycen W., Kyson B., Skyler L.,
 Michael B., Curtis V., Eli B. Jacob E.

