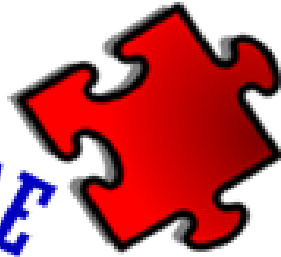


PATHS TO INDEPENDENCE



Newsletter

Spring Thoughts

Since it's March, the month of my grandmother's birthday, I wanted to write about her life, and her contribution to PTI.

My grandmother, Connie Hinkle, grew up during the Depression and lived a modest life with her grandmother, my namesake, Clara. She married at 20 and had a daughter, my mother, Donna Thompson. Facing an unexpected divorce in her early 40's, she struggled to make a life on her own. Connie had never worked outside of the home or even learned to drive. In time, she mastered driving and obtained a job as a dental assistant. Connie always lived frugally and be-

seeded us to "always have a rainy day fund." I lost my grandmother last June, but because of her careful money management and a generous donation from my mother, Paths to Independence had enough funding to stay open on a full-time basis this school year.

Connie and I were close throughout my life. I miss her terribly and think about her daily. I like to think that she would be proud of what her savings helped to establish. I know she would have loved hearing about our students and all of our adventures.

- Clair Bartley



Volume 1, Issue 6
March 15, 2013

Upcoming Events:

- PTI Fun Nights- Thursdays from 6:30-8:30 (high school/adults)
- Parent Support Group meeting- March 28 @ 7:00
- Artism in April- fundraiser featuring artwork from individuals with autism spectrum disorders and those who support them- April 13, 2013
- Spring Break Camp- March 18-22 from 9:00 a.m. to 6:00 p.m.,

Inside this issue:

<i>Board Schedules Work Day</i>	2
<i>Playground Needs</i>	2
<i>All About... Macy Wright</i>	2
<i>March Student of the Month- Kieffer Jensen</i>	3
<i>New Way to Donate</i>	3
<i>PTI Fun Nights</i>	3
<i>Wish List/Donations</i>	4

Artism in April

Join Paths to Independence for a fundraising benefit on April 13, 2013. "Artism in April" will feature artwork by individuals with autism as well as artists who have an interest in supporting families affected by autism.

Artism in April will feature silent and live auc-

tions, light appetizers, and drinks. Tickets to the event are \$20 each.

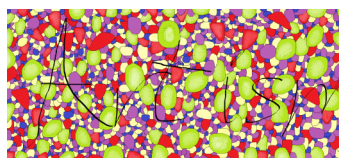
Money raised from this event will help continuing operational costs of PTI as well as fund scholarships for our summer program.

Come out and enjoy a fun event, learn more about autism, and find some in-

Harvey Bridendolph, great-grandfather of Spencer, grandfather of Audra, and father of Ruth Thompson asked that he be remembered through memorial donations in support of Paths to Independence. Harvey passed away on February 2, 2013. Thank you to his friends and family for their support of PTI.

teresting new art for your home or office.

Contact Clair Bartley at PTI (918) 914-9920 or paths@newsguy.com for tickets or more information.



Artwork by Laura Bliss

PTI Board Schedules Work Day

Saturday, April 6, 2013 has been scheduled as a work day to prepare the classrooms and playground for our accreditation visit on April 24th. The board has prepared a list of needed repairs and items to improve the look of our classrooms and to update the playground to meet new DHS guidelines. (See article below.)

We will be here from 9 a.m. until 5 p.m. or until all the work is finished. If you are handy with a hammer or paint brush, please come and help.

Also, you can check our wish list and the playground needs list for items



PTI would like to have. Items can be new or used, so clean out your garage or play rooms if you have well-maintained, gently used items. You can bring any donations to PTI on or before April

6th at 4041 Sheridan Road.

Jobs Requested

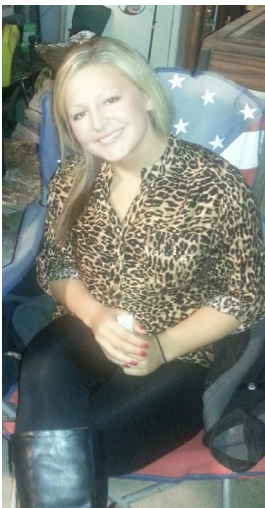
- Painting shelves and cubby areas
- Repair shelves
- Clean/improve motor room storage
- Replace/repair broken timbers on playground
- Paint/repair back of building
- Build a top for the sandbox
- Build raised flower beds
- Assemble bicycle storage shed

Playground Needs

DHS guidelines now require that our playground be divided into eight centers. PTI would like help in collecting outdoor items to meet these guidelines and to make our playground more interesting for our students. The following are the 8 centers plus some ideas for them. If you have any of these items or would like to purchase them for PTI, please let us know. Also, if you have ideas for alternatives, we are always open for suggestions or alternate donations.

- Dramatic play**– play house
- Blocks**– outdoor blocks, large play trucks
- Music/Movement**– wind chimes, tin plates tied to fencing
- Science**– bird feeders, raised beds for herb garden
- Art**– black board painted on back of building/chalk
- Reading**– outdoor glider or rocker, in door/outdoor rug, book cart
- Manipulatives**– sand box toys, alphabet and number pebbles for sandbox
- Math**– obstacle course painted on fence with counting (1, 2, 3 hop)

“Play is the highest form of research.” ~ Albert Einstein



All About. . . Macy Wright

Macy started working for PTI in January of this year. Macy is a student at Oklahoma Wesleyan University where she is an Early Childhood Education major. As a

softball player for OKWU, Macy is a very busy student. Macy only works for PTI on Monday mornings, so she has spent most of her time working with Kieffer or Eric. Macy is an excellent help on Monday mornings because she is fast and efficient in helping to prepare new activities for the students. Macy is an excellent addition to our PTI staff because she has a calm, quiet personality that helps our students fo-

cus on instruction. We’re looking forward to having Macy around more often when her schedule is less demanding.

Student of the Month: Kieffer Jensen

The inspiration for Paths to Independence, Kieffer Jensen is our March student of the month. Kieffer is a full-time third grader at PTI. He loves to go out in the community, especially if we're heading to McDonald's or to walk at



the mall. In addition to being a lifelong book-lover, Kieffer has developed an interest in music, especially the song "Bananaphone." We are very proud of Kieffer for all the things he has learned to do in the last few months, including sweeping up messes, climb-



ing through tunnels, and vocalizing his favorite word, "No!" Kieffer is the son of one of PTI's founders, Jean Jensen and her husband, Mark Keesling.



New Way to Donate to PTI

Banc First Executive Vice-President, Brenda Robertson, made a presentation to PTI's board about setting up a system for accepting small, regular donations. Anyone who is interested in supporting PTI, but who would like to do it in small increments, can set up an automatic bank draft on a monthly basis. For a non-profit, these small donations are a great source of revenue and an ongoing source of funding.

If you are interested in help-

ing PTI this way, please contact Jean Jensen at 918-914-3125 or Clair Bartley at 918-914-9920. The form will be available on our website, www.pathstoindependence.org and included in this newsletter.

Even \$10 a month adds up to \$120 a year. Please consider giving. Paths to Independence depends on the generosity of the Bartlesville community, friends, and family to fund ongoing programs for children with autism.

"It's not how much we give but how much love we put into giving."

— Mother Teresa

PTI Fun Night Adults celebrate Valentine's Day



PTI's high school/adult group had a fun time making

Valentines for each other on February 14th. Audra brought supplies to make tie-dye Valentines as well as the

more traditional paper, glitter, and heart shaped cut-outs. We had Valentine themed snacks and played a get-to-know you Bingo game. Everyone left with a bag of Valentines and a smile. If you are an adult or high school student with an autism spectrum disorder, or you just want to join in the fun, come to PTI on Thursdays from 6:30-

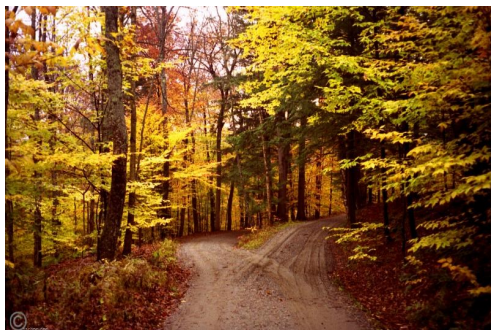
8:30. In March, we'll have movie night, a St. Patrick's Day party, a trip to the Philbrook Museum, and an egg-dyeing party.



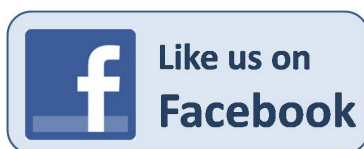
Paths to Independence

4041 Sheridan Road
Bartlesville, OK 74006

Phone: 918-914-9920
Fax: 918-333-4511
E-mail: paths@newsguy.com



*Two roads diverged in a wood,
and I . . . I took the one less traveled
by and that has made all the
difference. —Robert Frost*



We're on the web!
www.pathstoindependence.org



Paths to Independence is a nonprofit agency dedicated to serving the needs of families affected by autism. PTI was incorporated in November 2011 and opened its doors for an eight week summer program in June 2012. PTI currently offers a full day school program, a part day school program, structured after school care, and adult classes. In addition, PTI serves as a meeting place for the Bartlesville Autism Parent Support Group. For more information, contact Clair Bartley at 918-914-9920 or Jean Jensen at 918-914-3125.

Wish List

The following are items needed by PTI:

- 4 3/8 x 6 1/2" laminating sheets
- Stamps
- Outdoor play house or cabin
- Wind chimes
- Outdoor play trucks
- Sand
- Bird feeders
- Blackboard paint
- Outdoor glider or rocker
- Outdoor rug
- Rolling book caddy
- Sand box toys
- Herb seeds
- Planting soil



Donations

Thank you to the following donors for February.

Bank of Oklahoma

Wil Gibson (photography)/ Jody Gibson (vacuum)

Mark Keesling and Jean Jensen

Jimmy and Lees Choate

Phillip 66 Claims Group

Charles and Melanie Waymaster

John and Lorri Hanna

Dr. Charles H. Johnson

David and Gretchen Paul

John Foote III

Pam Danel

Terry Mitchell and Richard Scadden

John Deitch of Mendes and Mount, LLP

Donald Calnan

Jane Phillips Society

Donations help PTI provide salaries for staff, activities for the students, and scholarships. Please consider donating to PTI, 4041 Sheridan Road, Bartlesville, OK 74006. PTI is a 501(c)3 tax-exempt organization.